

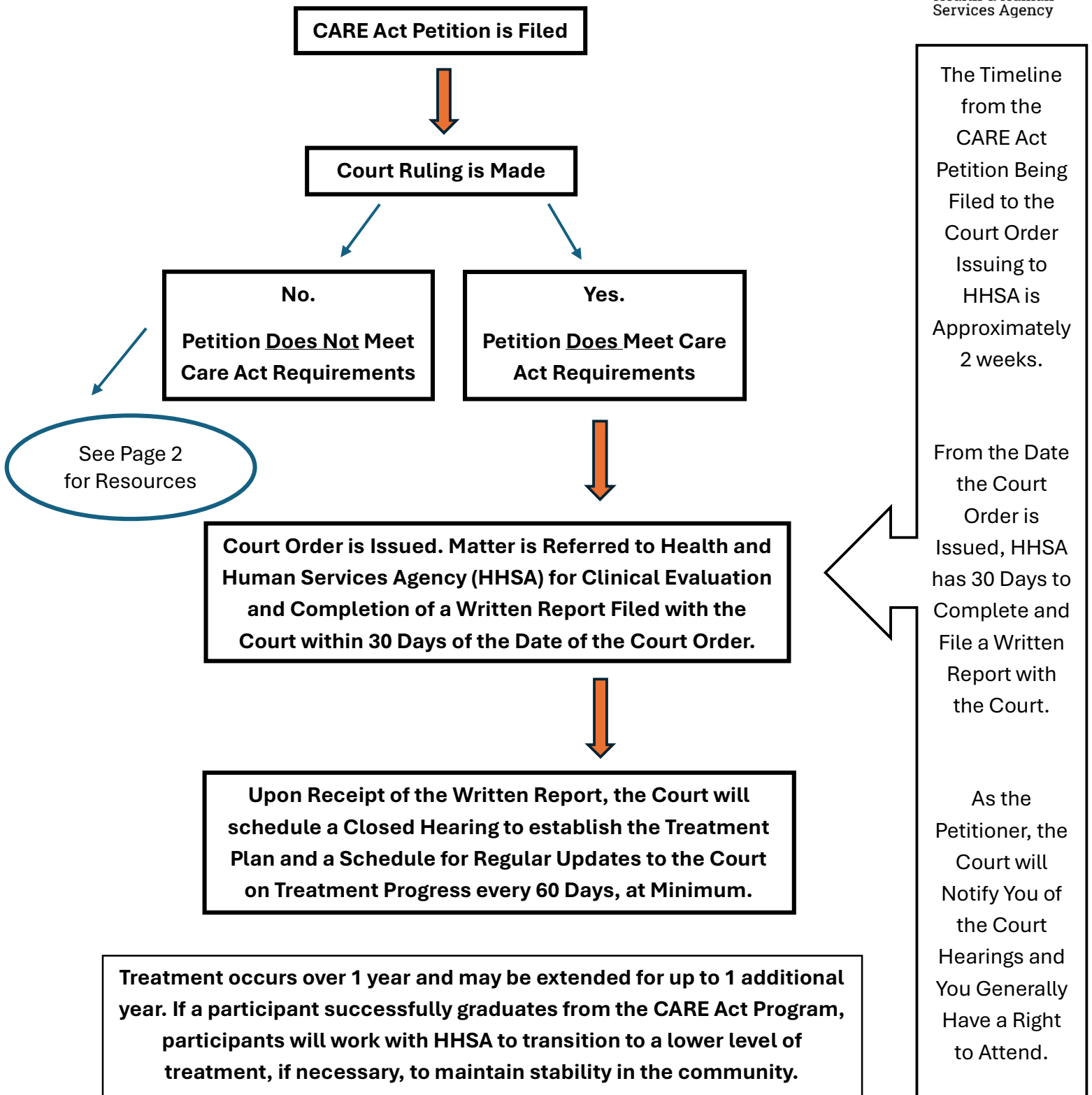
# Napa County CARE Act Court Proceedings Chart & Timeline



SUPERIOR COURT OF CALIFORNIA  
COUNTY OF NAPA



NAPA COUNTY  
Health & Human  
Services Agency



## Resources: Other Avenues of Support



SUPERIOR COURT OF CALIFORNIA  
COUNTY OF NAPA



NAPA COUNTY  
Health & Human  
Services Agency

If a CARE Act Petition is not accepted by the Court or the participant chooses not to take part in the program, there are many other ways to find support. If someone you know needs help, please use the resources below.

As indicated by the Chart on Page 1, the filing of a CARE Act Petition does not initiate an emergency or crisis intervention. Instead, it initiates a court process. Therefore, if you suspect that the individual you are petitioning for has an urgent mental health need, please contact Napa County Health and Human Services Agency's **24-Hour Mental Health Crisis Hotline at 707-253-4711**. For more information on local mental health crisis services, please visit HHSA's [website](#).

If you believe there is an immediate life-threatening danger, or significant risk of harm to self or others, please **call 911** immediately.

You may also text or dial the National Suicide prevention Lifeline by calling or texting 988. For more information, please refer to the website linked here: [988 Lifeline - If you need emotional support, reach out to the national mental health hotline: 988](#).

Links to other helpful resources include the following:

[Napa County Superior Court CARE Act](#)

[Napa County Health & Human Services Agency Behavioral Health Services](#)

[Napa County Health & Human Services Agency 24-Hour Mental Health Crisis Services](#)